



Spanish Mountain Gold Ltd.
910-1111 Melville Street
Vancouver, British Columbia, V6E 3V6
Tel: 604.601.3651

Spanish Mountain Gold Intercepts Extensive Near Surface Gold Mineralization at the Phoenix Target

Vancouver, B.C., June 2, 2025 - Spanish Mountain Gold Ltd. (the "Company" or "Spanish Mountain Gold") (TSX-V: SPA) (FSE: S3Y) (OTCQB: SPAUF) confirms extensive, near surface gold mineralization intersected with overall approximate length, width and vertical depth of 1,450 m x 450 m x 60-320 m at the Phoenix Target, which is part of the Spanish Mountain Gold project, located in the Cariboo Gold Corridor, British Columbia, Canada. The Phoenix Target remains open in all directions. The 10,000 m 2025 winter diamond drilling program (the "Program") has been completed with a total of 31 holes, including 14 holes drilled on the Phoenix Target. While some assays from the Program are still pending the Company now has the results for all the holes drilled on the Phoenix Target.

Highlights:

Confirmed Extensive, near surface gold mineralization containing high grade intercepts in a potentially new geological setting – Phoenix Target (See Figures 1, 2, and Table 1):

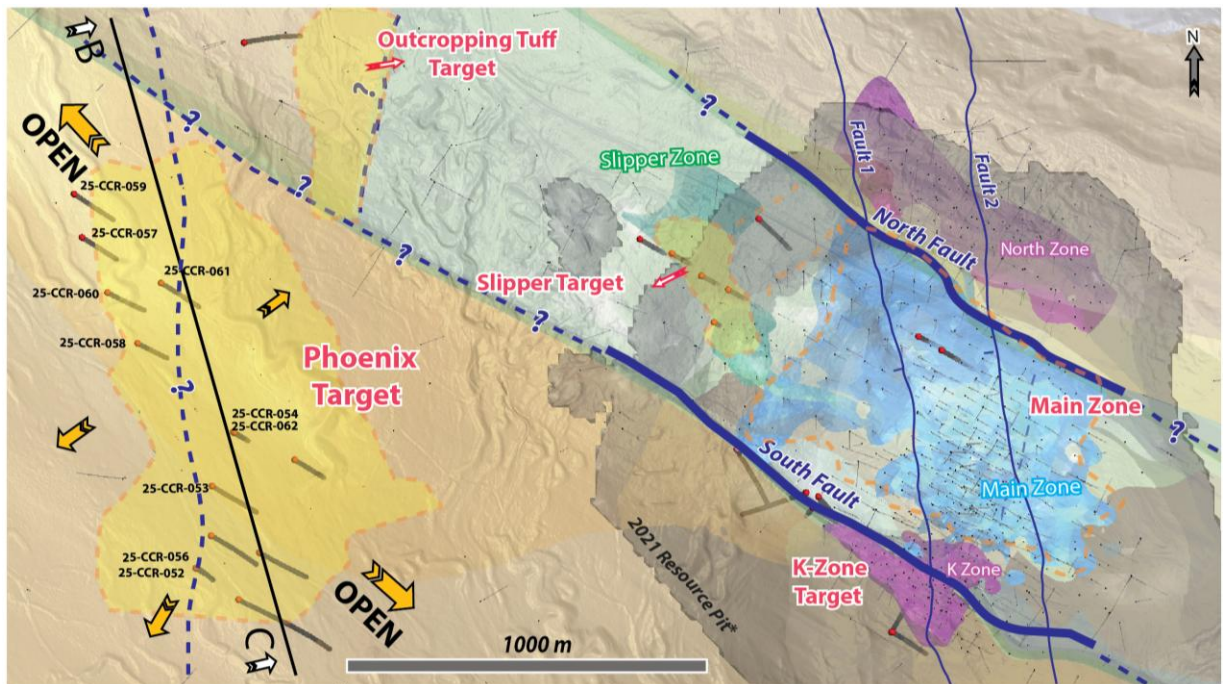
- Hole 25-CCR-062 intersected **62.00 m grading 1.47 g/t Au** from 227.00 m including **4.00 m grading 17.28 g/t Au**
- Hole 25-CCR-053 intersected **188.20 m grading 0.31 g/t Au** from 63.00 m including **62.00 m grading 0.48 g/t Au**. Also 74.00 m grading 0.29 g/t Au from 274.00 m including **0.85 m grading 6.55 g/t Au**
- Hole 25-CCR-056 intersected **153.64 m grading 0.37 g/t Au** from 42.36 m including **116.00 m grading 0.40 g/t Au** from 80.00 m and **13.12 m grading 1.27 g/t Au**
- Hole 25-CCR-057 intersected **58.56 m grading 0.42 g/t Au** from 125.00 m including 7.80 m grading 1.31 g/t Au and 4.80 m grading 1.55 g/t Au
- Hole 25-CCR-058 intersected **57.00 m grading 0.41 g/t Au** from **109.00 m** including 20.00 m grading 0.58 g/t Au and 1.30 m grading 4.85 g/t Au
- Hole 25-CCR-059 intersected **37.60 m grading 0.43 g/t Au** from 257.90 m including **1.01 m grading 3.20 g/t Au** and 1.50 m grading 1.26 g/t Au

- Hole 25-CCR-060 intersected **68.00 m grading 0.24 g/t Au** from 93.90 m including 2.00 m grading 2.50 g/t Au. Also **40.40 m grading 0.60 g/t Au** from 197.15 m including 10.00 m grading 1.29 g/t Au

Expanding Resource Potential:

Drilling results continue to confirm the expansion of gold mineralization along the Phoenix Target over a strike length exceeding 1.4-kilometers, 450 m wide and with a consistent mineralization zone(s) with an estimated vertical depth ranging from approximately 60 - 320 meters. Containing broad intercepts of mineralization consistently grading 0.40 g/t Au and higher-grade intervals ranging from 1.0 to greater than 20.0 g/t Au substantially increases the potential for a significant addition to the Spanish Mountain Gold project's resource base. The Company has engaged Equity Exploration to establish a maiden resource estimate on the Phoenix Target (the "**Phoenix MRE**") anticipated to be completed in the second quarter of 2025. The Phoenix MRE will be included in the upcoming Preliminary Economic Assessment technical report for the Spanish Mountain Gold project expected to be released in the second quarter of 2025 (the "**Updated PEA**"). Due to the expected timing of the Phoenix MRE, it is not anticipated that the Phoenix Target will be included in the economic analysis contained in the Updated PEA.

Peter Mah, Spanish Mountain Gold's President, CEO and Director commented, "The recent drill success near surface at Phoenix further demonstrates the potential to expand the gold resource base and for value creation upside at the Spanish Mountain Gold project. The awakening Phoenix Target, dormant since 2011, is located 1.4 kilometers west of our main deposit. Phoenix is intriguing our team in what appears to be an emerging new geological host setting for gold that remains open in all directions and present in other nearby areas such as the K Zone and Outcropping Tuff targets."



<p>Simplified Geology</p> <ul style="list-style-type: none"> Undefined Volcanics Greywacke Mafic Tuff <p><small>*2021 Resource Pit (Constrained to Spanish Creek buffer - Refer to Mineral Resource NI 43-101 Technical Report, effective date May 2021)</small></p>	<p>2025 Drill holes</p> <p>Historic Drill Hole</p>	
--	---	--

Figure 1 – Plan View, - 2025 Winter Drill Program

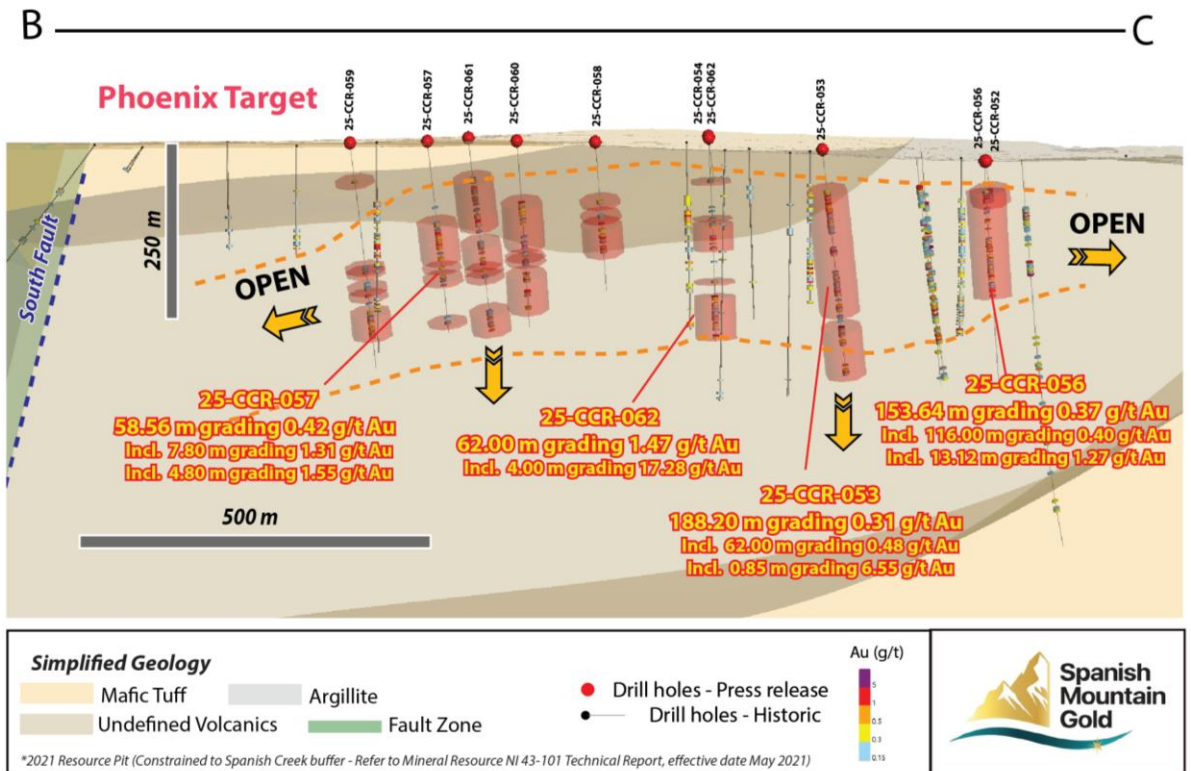


Figure 2 – Long Section showing the Phoenix Target

Phoenix Target Details:

Drill holes 25-CCR-052 to 25-CCR-062, were drilled to follow up on the large target discovered in 2011 (refer to press release dated December 7, 2011, "Spanish Mountain Gold Announces Discovery of New Gold Zone") and recently expanded upon in our April 24, 2025, release "Spanish Mountain Gold Reports Initial Drill Results Multiple Near Surface and High-grade Intercepts 2025 Winter Exploration Program"

The results from these new holes continue to demonstrate the expanding footprint of gold mineralization in the Phoenix Target area, with consistent grades over significant widths.

Table 1: 2025 Winter Drill Program – Summarized Gold Assay Results

Drillhole ID	From	To	Width(m)	Gold Grade (g/t Au)
25-CCR-052	44.00	63.00	19.00	0.36
including	44.00	46.00	2.00	1.98
25-CCR-053	63.00	251.20	188.20	0.31
including	63.00	125.00	62.00	0.48
including	69.30	98.00	28.70	0.73
25-CCR-053	274.00	348.00	74.00	0.29
including	274.00	290.00	16.00	0.68
including	274.00	274.85	0.85	6.55
including	340.00	343.75	3.75	1.06
25-CCR-056	42.36	196.00	153.64	0.37
including	80.00	196.00	116.00	0.40
including	115.00	131.00	16.00	0.50
including	153.90	168.00	14.10	0.66
including	182.88	196.00	13.12	1.27
including	185.00	188.00	3.00	3.59
25-CCR-057	125.00	183.56	58.56	0.42
including	138.20	146.00	7.80	1.31
including	138.20	143.00	4.80	1.55
25-CCR-057	194.23	196.00	1.77	0.34
25-CCR-057	207.89	215.90	8.01	0.42
25-CCR-057	276.00	279.65	3.65	0.43
25-CCR-058	109.00	166.00	57.00	0.41
25-CCR-058	124.70	170.00	45.30	0.49
including	124.70	126.00	1.30	4.85
including	146.00	166.00	20.00	0.58
including	160.18	166.00	5.82	1.01
25-CCR-059	257.90	295.50	37.60	0.43
including	270.75	271.76	1.01	3.20
including	291.00	292.50	1.50	1.26
25-CCR-060	93.90	161.90	68.00	0.24
including	93.90	95.00	1.10	1.16
including	159.00	161.00	2.00	2.50
25-CCR-060	197.15	237.55	40.40	0.60
25-CCR-060	203.00	259.23	56.23	0.47

including	203.00	213.00	10.00	1.29
including	230.00	234.00	4.00	2.24
25-CCR-061	62.00	137.00	75.00	0.21
including	127.79	130.00	2.21	1.14
25-CCR-061	161.00	196.00	35.00	0.32
including	193.29	196.00	2.71	2.31
25-CCR-061	204.00	206.00	2.00	0.49
25-CCR-062	122.00	161.00	39.00	0.23
including	143.00	147.73	4.73	0.82
25-CCR-062	227.00	289.00	62.00	1.47
including	227.00	229.00	2.00	2.19
including	283.00	287.00	4.00	17.28
including	285.00	287.00	2.00	23.03

Notes:

- 1) Reported intersections are calculated using a 0.15 g/t Au cut-off grade.
- 2) The complete assay table is available on the [Company's website](#).
- 3) The true thickness of mineralization is unknown.
- 4) Results from 10 of 11 drilled holes. One hole was abandoned due to hole conditions during drilling.

Table 2: Drill Hole Collar Location, hole depths, and core size

HOLE-ID	LOCATION 'X'	LOCATION 'Y'	LOCATION 'Z'	LENGTH	Azimuth	Dip	Core size
	Easting	Northing	Elevation				
25-CCR-052	602218	5827525	1016	63	120	65	HQ
25-CCR-053	602264	5827755	1032	348	120	65	NQ
25-CCR-054	602327	5827906	1051	70	120	65	NQ
25-CCR-056	602222	5827527	1016	324	120	80	HQ
25-CCR-057	601898	5828454	1026	294	120	65	HQ
25-CCR-058	602055	5828157	1032	230	120	65	HQ
25-CCR-059	601876	5828576	1022	345	120	65	HQ
25-CCR-060	601970	5828299	1030	287	120	65	HQ
25-CCR-061	602121	5828326	1039	299	120	65	HQ
25-CCR-062	602323	5827907	1049	294	120	80	HQ

Abbreviations: metres = m, grams per tonne = g/t, gold = Au

Drill Core Processing, Data Verification and Quality Assurance – Quality Control Program (QAQC)

Once received from the drill and processed, all drill core samples were sawn in half, labeled, and bagged. The remaining half of the drill core was securely stored on-site. Numbered security tags were applied to sample shipments to ensure chain of custody compliance. The Company inserts quality control (QC) samples at regular intervals, including blanks and reference materials, for all sample shipments to monitor laboratory performance. Standards and blanks account for a minimum of 15% of the samples in addition to the laboratory's internal quality assurance programs. The QAQC program

was overseen by the Company's Qualified Person, Julian Manco, P.Geo, Director of Exploration (as described below).

Drill core samples were submitted to MSALABS' analytical facility in Prince George, British Columbia, for sample preparation and PhotonAssay™ analysis. The MSALABS facilities are accredited to the International Standards ISO/IEC 17025 and ISO 9001 standard for gold and multi-element assays, with all analytical methods incorporating quality control materials at defined frequencies and established data acceptance criteria. MSALABS Inc. is independent of the Company.

PhotonAssay™

The PhotonAssay™ method utilizes gamma ray analysis for gold detection using the Chryso PhotonAssay™ instrument (PA1408X). This non-destructive, fully automated technique offers high accuracy for analyzing ores and pulps. Sample preparation begins with drying and crushing up to 1 kg of material to achieve at least 70% passing through a 2-millimetre (mm) sieve. The sample is then riffle split to obtain a suitable aliquot for 2 testing cycles (MSALABS Method CPA-Au1).

The PhotonAssay™ instrument bombards 400 - 600 gram samples contained in sealed containers with gamma rays. These containers remain sealed throughout the process, preserving the sample for potential further testing. The analysis is performed robotically, with results that integrate into existing laboratory management systems.

Each sample is accompanied by a reference disc traceable to a Certified Reference Material (CRM). Both the sample and reference disc undergo gamma ray exposure, with signals detected and analyzed to ensure accurate and reliable results.

The method offers a gold detection range from 0.015 parts per million (ppm - lower limit) to 10,000 ppm (upper limit). Quality control includes the use of reference materials and blanks, with all results reviewed by a competent person before reporting.

Spanish Mountain Gold implemented two QAQC methodologies to validate the accuracy of PhotonAssay™ results, both demonstrating good comparability: 1) comparative analysis of diverse mineralization styles using Total Au screen metallic methods with both FAS-415 (gravimetric finish) and FAS-211 (AAS finish), and 2) comprehensive testing of both sample aliquots and rejects using FAS-211 (AAS finish).

QAQC Testing typically can include the following spot checks: 1) Pulverizing tests to evaluate variability in sample preparation, 2) Cross-analysis at external laboratories using screen metallic method, and 3) Four-cycle radiation testing to identify and calibrate potential variability in gold results with variable radiation intensity.

To effectively manage the nugget effect on high-grade gold samples MSALABS tested samples to "extinction" (CPA-Au1E method). This approach divides samples into multiple splits, analyzes each separately using PhotonAssay™, and then calculates a weighted average of the results. By testing various portions of the sample independently and combining their values proportionally, this method provides significantly more representative gold values than traditional single-split analysis for samples with a large nugget effect.

Multi-Elemental Analysis

For the 2025 drilling campaign Spanish Mountain Gold used IMS-230 method to provide multi-element determination using a four-acid digestion followed by ICP-OES and ICP-MS analysis.

Key Process Steps:

Sample Preparation: Samples are dried and ground to specific criteria (85% passing 75 microns (µm) for rocks and drill core; 180µm for soils and sediments). A homogeneous 10-gram sample is required.

Digestion: Samples undergo sequential digestion with nitric, perchloric, hydrofluoric, and hydrochloric acids, followed by dilution with deionized water.

Analysis: The solution is analyzed via ICP-OES and ICP-MS for multi-element quantification.

Quality Control: The process includes reference materials, blanks, and duplicates, with corrections for spectral interferences and thorough review before final reporting.

Julian Manco, M.Sc., P.Geo., has verified the data disclosed in this news release. The data verification process involved a multi-step approach to ensure accuracy and integrity. This included a detailed quality control (QC) analysis of the data, which was performed using both internal and external platforms, such as the MxDeposit™ software. These QC checks involved the analysis of certified reference materials (CRMs), blanks, and duplicates to confirm the reliability of the assay results. In addition, Mr. Manco, conducted a field inspection of the specific drill intervals mentioned in this release to directly observe the geological features and verified the nature of the results presented.

Qualified Person

Julian Manco, M.Sc., P.Geo., Director of Exploration with Spanish Mountain Gold, is the Qualified Person as defined under National Instrument 43-101 who has reviewed and has approved the contents of this news release.

About Spanish Mountain Gold Ltd.

Spanish Mountain Gold Ltd. is focused on advancing its 100%-owned Spanish Mountain Gold Project towards construction of the next gold mine in the Cariboo Gold Corridor, British Columbia. We are conducting an integrated Whittle Enterprise Optimization to identify the highest potential value-add improvements while increasing the understanding of the high-grade geologic controls and associated drill targets that could upgrade and expand the gold resource. We are striving to be a leader in community and Indigenous relations by leveraging technology and innovation to build the 'greenest' gold mine in Canada. The Relentless Pursuit for Better Gold means seeking new ways to achieve optimal financial outcomes that are safer, minimize environmental impact and create meaningful sustainability for communities. Details on the Company are available on www.sedarplus.ca and on the Company's website: www.spanishmountaingold.com.

On Behalf of the Board,

"Peter Mah"

President, Chief Executive Officer and Director
Spanish Mountain Gold Ltd.

For more information, contact:

Peter Mah
(604) 601-3651
info@spanishmountaingold.com

Neither the TSX Venture Exchange nor its Regulation Services Provider (as that term is defined in the policies of the TSX Venture Exchange) accepts responsibility for the adequacy or accuracy of this release.

FORWARD-LOOKING INFORMATION:

Certain of the statements and information in this press release constitute "forward-looking information". Any statements or information that express or involve discussions with respect to predictions, expectations, beliefs, plans, projections, objectives, assumptions or future events or performance (often, but not always, using words or phrases such as "expects", "anticipates", "believes", "plans", "estimates", "intends", "targets", "goals", "forecasts", "objectives", "potential" or variations thereof or stating that certain actions, events or results "may", "could", "would", "might" or "will" be taken, occur or be achieved, or the negative of any of these terms and similar expressions) are not statements of historical fact and may be considered forward-looking information. The Company's forward-looking information is based on the assumptions, beliefs, expectations and opinions of management as of the date of this press release and include but are not limited to information with respect to, the potential to extend mineralization within the near-surface environment; the potential to expand resources and to find higher-grade mineralization at depth; the timing, size and budget of a winter drill program, and the results thereof; and the delivery of a maiden resource for the Phoenix Target, and the timing and results thereof. Other than as required by applicable securities laws, the Company does not assume any obligation to update forward-looking information if circumstances or management's assumptions, beliefs, expectations or opinions should change, or changes in any other events affecting such statements or information. For the reasons set forth above, investors should not place undue reliance on forward-looking information.